



Haicom HI-601VT Auto Re-dialer



Easy Manual

HI-601VT auto re-dialer and software

Introductions:

HAICOM HI-601VT auto re-dialer and software is the optional accessories to the HI-601VT. Simply insert any valid local telecomm. GSM SIM card and turn the power on, user can easily perform the simple vehicle management and monitor several vehicles or personals and record the path in one program without any complicated GPRS telecomm protocol set up or any special program or map. User no need pay any monthly fee or contract with local control center or service provider. It is most suitable for small scale vehicle management purposes, like the rental car owner, agriculture or construction vehicles owner, family user, etc. As long as you want to track and record several moving objects in the same time, the auto re-dialer is most ideal and most suitable solution.

Inside the auto re-dialer unit, there is a GSM module and a HI-601VT dial tone decoder. After set up the inclusive program, the auto re-dialer will start to call and hang up in certain interval time to each moving object one by one and continue dialing and hang up as a loop. After the auto re-dialer dial and connected to certain moving object, the decoder inside will start to decode the sent back dial tone (DTMF signal) into the standard GPS NMEA protocol data and show the real time position on the Google map. User can monitor several moving objects even though the object in different countries or spread on any corner of the world.

Accessory List



1. Small CD : Video clips / User instruction / USB driver /
Haicom AVL Dispatch system program
2. Auto Re-dialer main unit
3. AC plug adaptor
4. AC / DC adaptor INPUT:100-240V~50/60HZ 0.5A
 OUTPUT:DC12V 1.0A
5. GSM Antenna
6. USB data cable

1. 使用說明光碟---影片說明
2. Auto-Redialer 主機一台
3. 插座轉換頭一個
4. 變壓器一個---INPUT:100-240V~50/60HZ 0.5A
 OUTPUT:DC12V 1.0A
5. GSM 天線
6. USB 資料傳輸線

How to connect



1. Internet access
2. USB port
3. AC / DC adaptor (DC 12V in)

- Please install the USB driver before the AVL dispatch system installation
(See Appendix A)

Getting Started



1. Point in the yellow part with a pen to release the SIM card holder.

1. 紅色圈圈處拿一支筆往內戳 SIM 卡的插槽就會跑出來



2. Place the local SIM care on the holder.
(Make sure disable the SIM card pin code requirement)
2. 把 SIM 卡依方向放進去然後再放回主機裡

Auto Re-dialer main unit Overview



1. Power in DC 12V 1.0A
2. GSM antenna plug
3. Data cable plug – make sure the LED Light act normally.
(See the LED details on the next page)

Open the AVL dispatch system software after checking if the LED act normally.

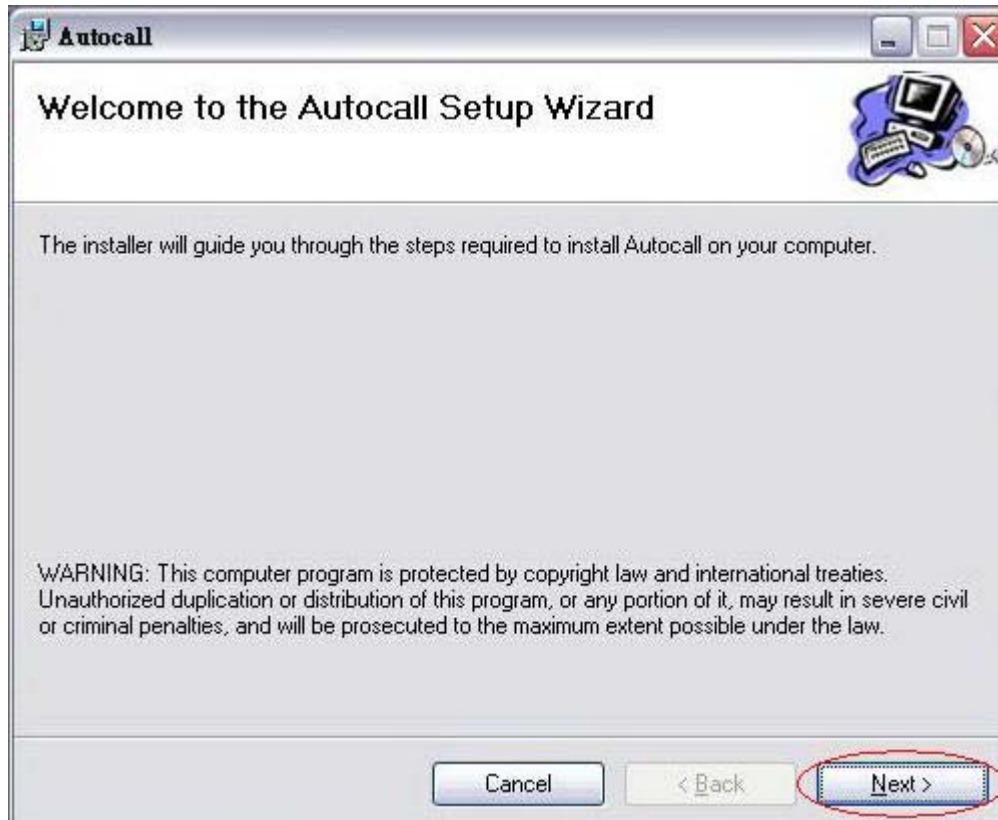
1. 電源輸入孔 DC12V 1.0A
2. GSM 外接天線孔
3. 資料傳送孔

接好後就可以看正面的燈號是否正常
無誤就可開啓 **DISPATCH SYSTEM**



Run the file inside the small CD

光碟裡有這檔案然後安裝它



Click Next

選 Next



Click Next

選 Next

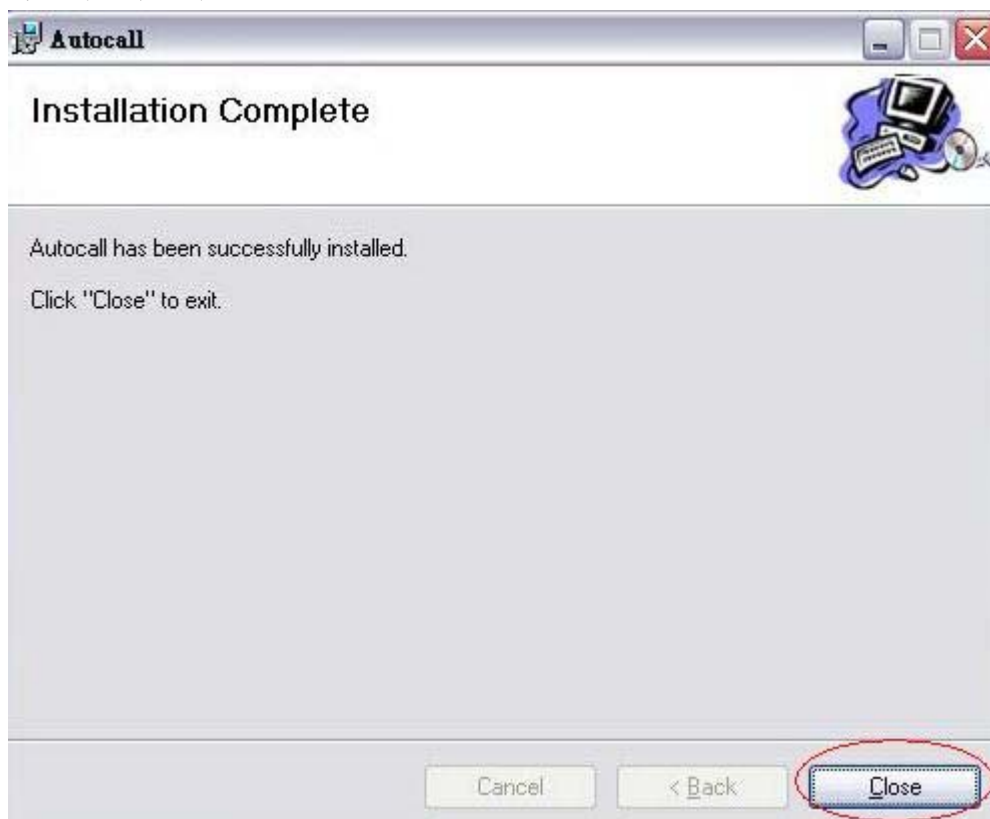


Click Next

選 Next



Wait until the program completed the auto-run
等檔案安裝完成

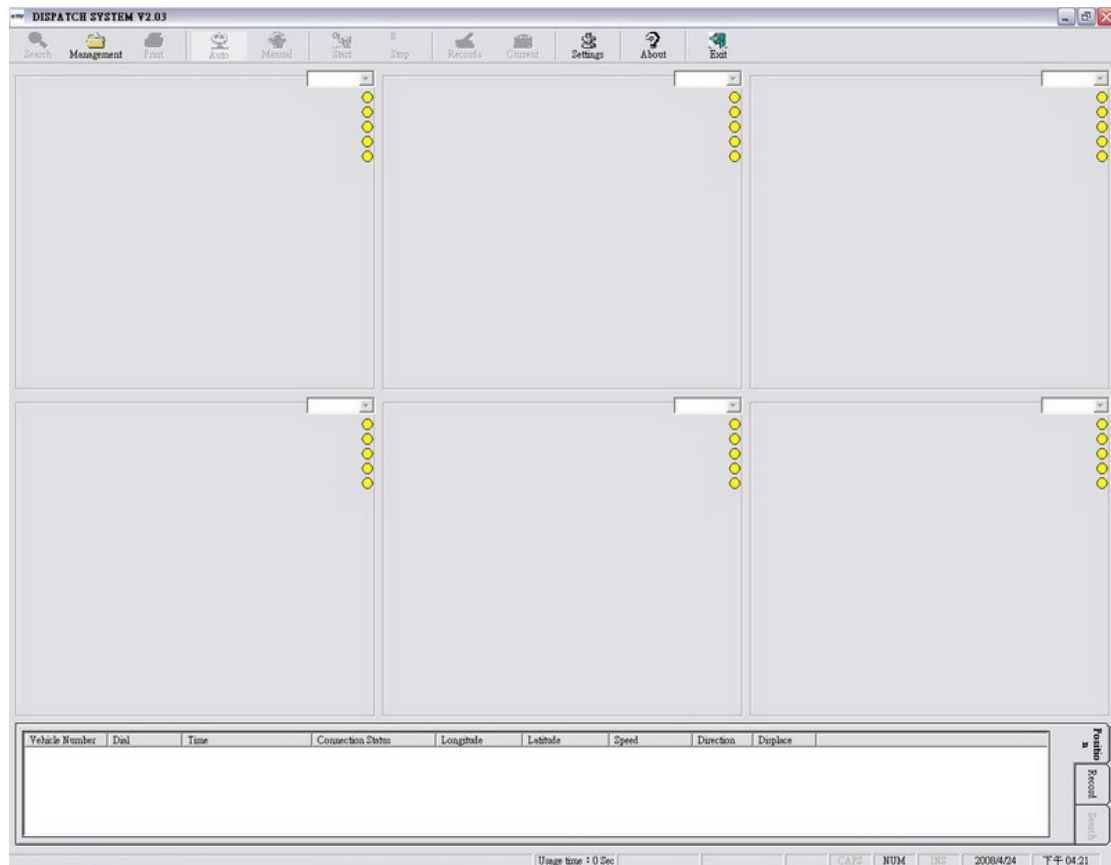


Click close
選 Close



The above icon will appear on your computer

桌面上會出現 DISPATCH SYSTEM



The above program will shown

開啓 DISPATCH SYSTEM 出現的畫面



Click management to enter the settings
選 **Management** 進入設定畫面

The image shows a software window titled "AVL Management". It has a menu bar with buttons: New, Edit, Delete, Cancel, Save, Search, First, Back, Forward, Last, and Exit. The main area contains several input fields: "Vehicle Number" (with a yellow highlight), "Dial" (radio buttons for Yes and No), "HI-601VT Phone Number", "Plate Number", "Drive name", "Telephone 1", "Telephone 2", "Cellular phone 1", and "Cellular phone 2". A red warning message reads: "* Vehicle number imports behind once, can not alter." Below the input fields is a "Style" section with four radio buttons and car icons (green, red, black, yellow). At the bottom, there is a "Data Record" section showing "0/0" and "No data".

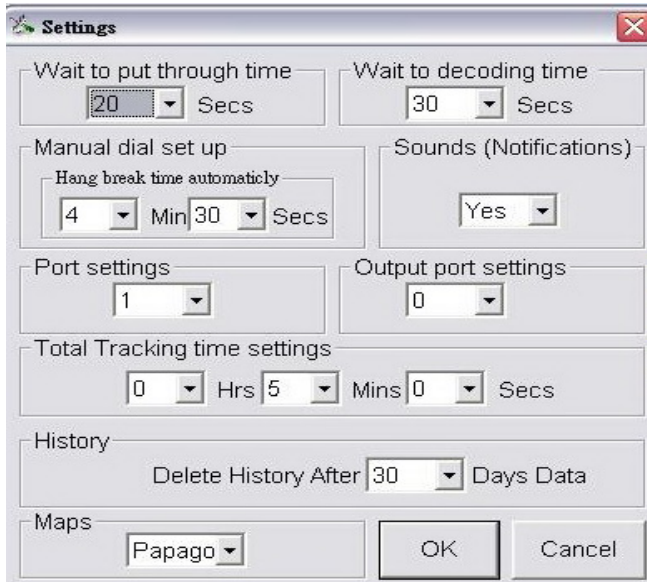
Select the New for new vehicle that you want to track and select Save after settings.
新增車輛就先選 **NEW** 設定好後選 **SAVE**

Vehicle Number 車輛編號
HI-601VT Phone Number 車上端 HI-601VT 上 SIM 卡的號碼

The above two items are necessary Key-in for the settings.
Other items , like Plate Number , Driver Name , Telephone number ,
Vehicle icon , etc. are optional Key-in.
這兩個比較重要一定要設定正確
其他如車牌號碼、姓名、電話、車子的顏色自行設定



Click settings after the tracker vehicle & basic information already Key-in.
到 [Setting](#)



Below are the explanations to the settings:

1. Wait to put through time:

The time that the auto re-dialer to attempt to dial until the GSM connection. The auto re-dialer will give up and dial the next set HI-601VT telephone number.

2. Wait to decoding time:

After the GSM connected, the time of connection will stay connected.

3. Manual dial set up: Check the certain vehicle on preferable longer time.

4. Sounds (Notifications): select with status sound or no sound

5. Port setting: the dispatch system program data input com port

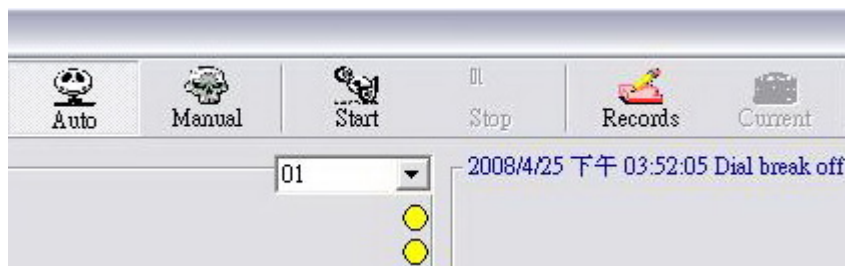
6. Output port settings: the dispatch system program data output com port

7. Total Tracking time settings: The interval between connections

8. History: Record the tracked data into your computer for how many days (maximum 365 days). After the day, the record will deleted automatically.

9. Maps: Display on what map. If select the Google map, please make sure the Internet connection OK.

Wait to Put through time	等待撥號的時間
Wait to decoding time	等待解碼的時間
Manual dial set up	手動撥號設定
Hang break time automaticly	自動掛斷時間
Sounds(Notifications)	是否需要嗶一聲
Port setting	資料傳進的 com port 設定
Output port settings	把資料傳出的 ocm port 設定
Total Tracking time settings	總循環式間
History	航跡紀錄設定
Delete History After ? Days Daye	自動刪除 ? 天前的資料
Maps	顯示地圖的選擇



After the settings , click Start to start tracking and management.
設定完成後就可啓動追蹤了

Auto tracking 自動追蹤

Divide the screen into 6 sections for simultaneously monitor.
這個項目畫面會分成六小格可以同時監看

Manual tracking 手動追蹤

Monitor one vehicle at a time.

(select the vehicle number on the upper right corner to monitor that specific vehicle)
這個項目畫面只能監看一台車要看別輛就要手動選擇

Start 開始追蹤

Start to track
啓動追蹤

Records 航跡查詢

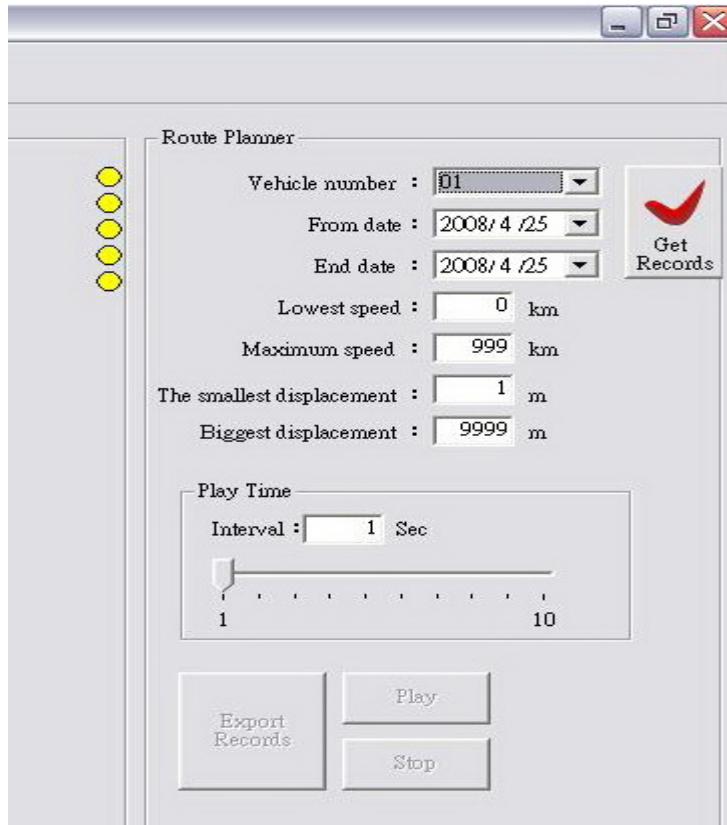
Check the historical records

可以觀看歷史航跡

The screenshot displays the DISPATCH SYSTEM V2.03 interface. The menu bar includes: Search, Management, Print, Auto, Manual, Start, Stop, Records, Current, Settings, About, and Exit. The main workspace is currently empty. On the right side, the Route Planner panel contains the following controls:

- Vehicle number: 01
- From date: 2008/4/25
- End date: 2008/4/25
- Lowest speed: 0 km
- Maximum speed: 999 km
- The smallest displacement: 1 m
- Biggest displacement: 9999 m
- Play Time Interval: 1 Sec
- Buttons: Export Records, Play, Stop
- Get Records button (with a red checkmark icon)

At the bottom of the interface, there is a table with the following columns: Dial time, STATUS, Longitude, Latitude, Speed, Direction, and Deviation. The table is currently empty. To the right of the table are buttons for Position, Record, and Search. The status bar at the bottom shows: Dial break off, Usage time : 0 Sec, CAPS, NUM, IRS, 2008/4/25, and 下午 04:09.



Vehicle number 選擇想觀看的車輛 Select the vehicle number for the historical date
 From Date 起始日期 Play back from
 End Date 結束日起 Play back end

Sort out the records which under the certain conditions.

Lowest speed	最低速度
Maximum speed	最高速度
The smallest displacement	最大位移
Biggest displacement	最小位移

Vehicle moving display : the records between loops.

To show only when the vehicle moving.

過濾出在速度不低於設定值的記錄. 或不高於某特定的速度.

The smallest displacement 是位置偏移, 即一點與一點之間的距離, 主要的用途是要去除那些停留在定點, 沒有移動時 GPS 位置的誤差.

Interval 播放間隔設定 Play back interval time

Vehicle Number	Dial	Time	Connection Status	Longitude	Latitude	Speed	Direction	Displace
01	Yes					0 m	North	0 m

Usage time : 0 Sec CAPS NUM INS 2008/4/25 下午 04:51

See each vehicle tracking status.

可以看到每一台被追蹤的狀態

Vehicle Number	Dial	Time	Connection Status	Longitude	Latitude
01	Yes				

Cancel tracing (D)

Usage

Click the mouse right button to temporary disable the Tracking.

按滑鼠右鍵可以選擇暫時取消追蹤

Dial break off					
2008/4/22 上午 11:01:58					
Dial to : 01					
Dial break off					
2008/4/22 上午 11:02:24					
Dial to : 01					
Dial break off					

Usage time : 0 Sec CAPS NUM INS 2008/4/25 下午 04:54

See Tracking status and log / lat.

可以觀看追蹤狀態還有經緯度

APPENDIX A

USB driver installation procedures

Windows XP Interface



1. Install GPS USB Driver

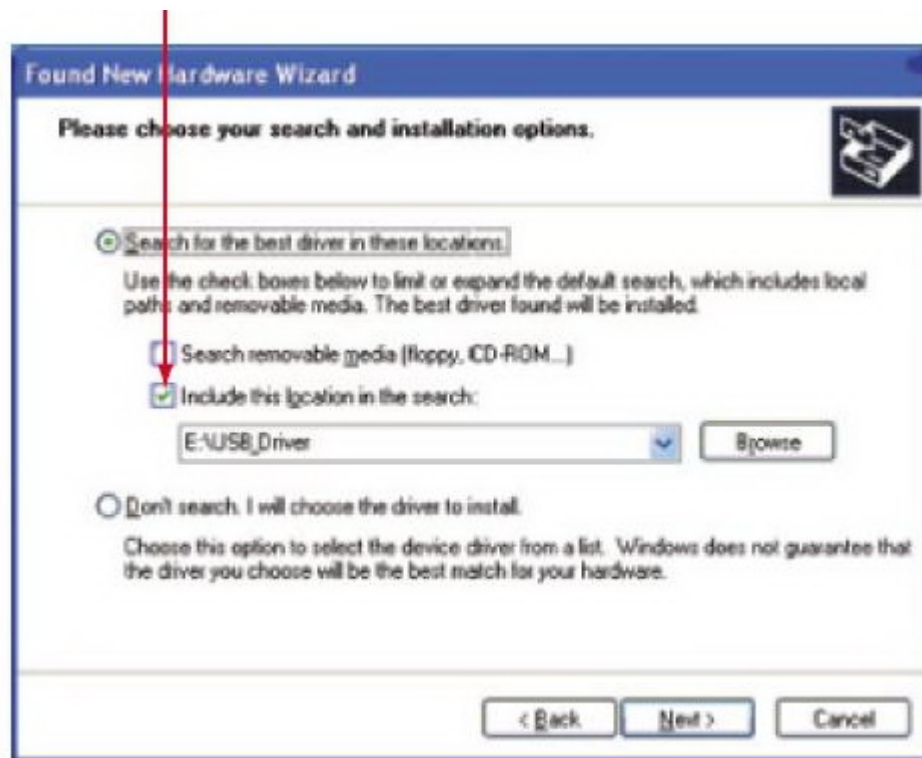
Before the installation of GPS USB driver, there are three procedures required. The first thing is to turn on PC in the Windows environment. The second thing is to copy USB driver into HDD. The third thing is to plug the GPS receiver into the USB port of PC and then follow the installation guide.

Step 1:

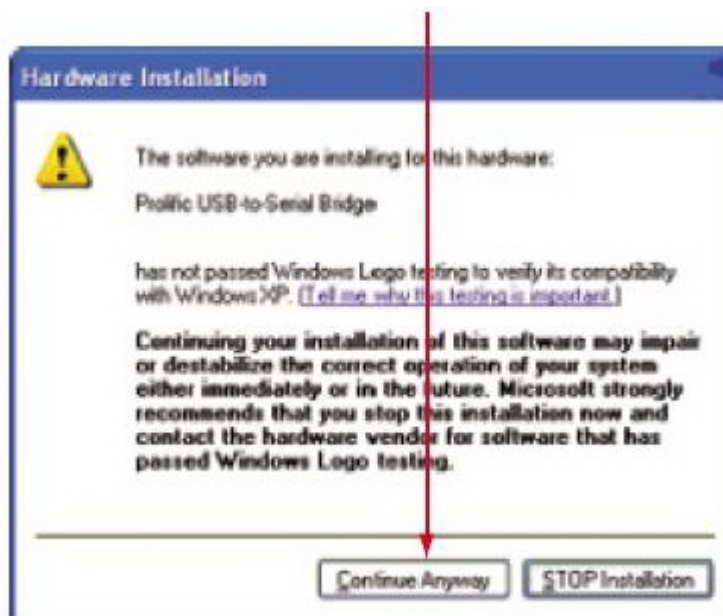
Select "Install from a list or specific location (Advanced)"



Step 2: Select "Include this location in the search" OR "Browse" to specific GPS USB driver location



Step 3: Click "Continue Anyway" button



Step 4:
Finish screen



2. Check Enable COM Port Number

After you install GPS USB driver, you should know which COM port is available, and check enabled COM port number.

You need to know the COM port assignment for the GPS receiver, when configuring map or chart software. Please notice that this remark is very important; if not configured properly, the mapping software will not communicate with the GPS receiver.

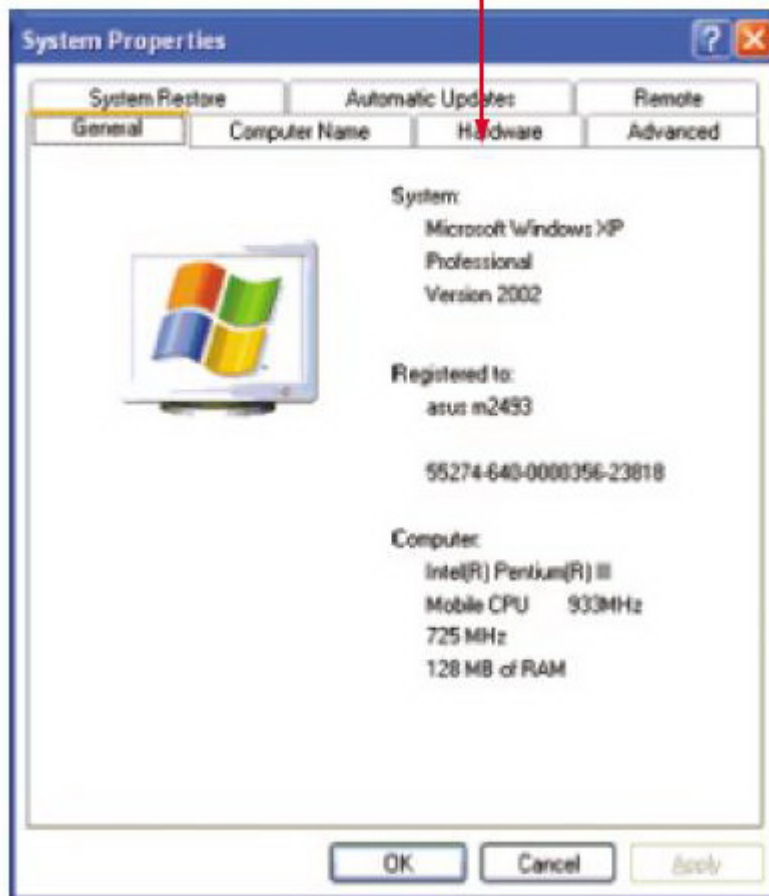
TO check your assigned COM port for the GPS receiver, please follow the instructions below.

Step 1:

Check enabled COM port number by clicking "Start" → clicking "Control Panel" → double-clicking "System" icon

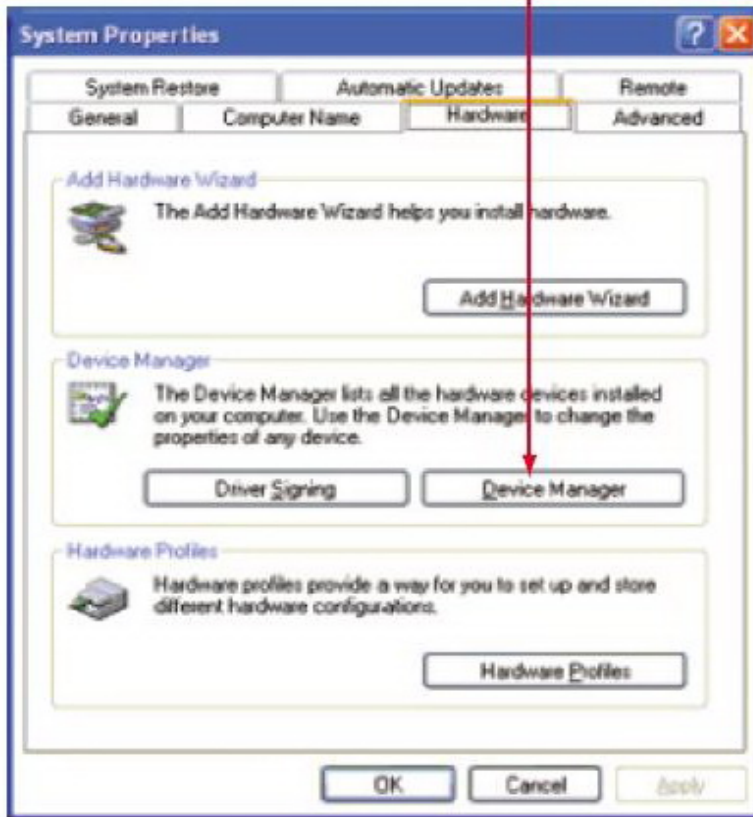
Step 2:

Select "Hardware"



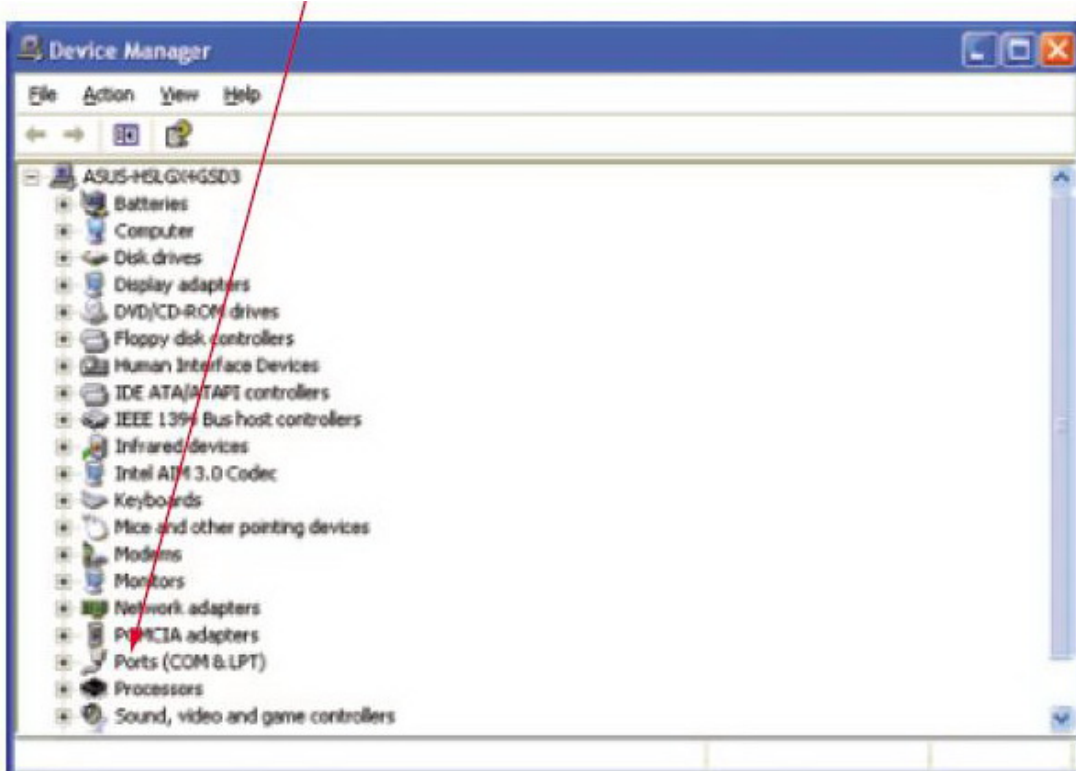
Step 3:

Select "Device Manager"



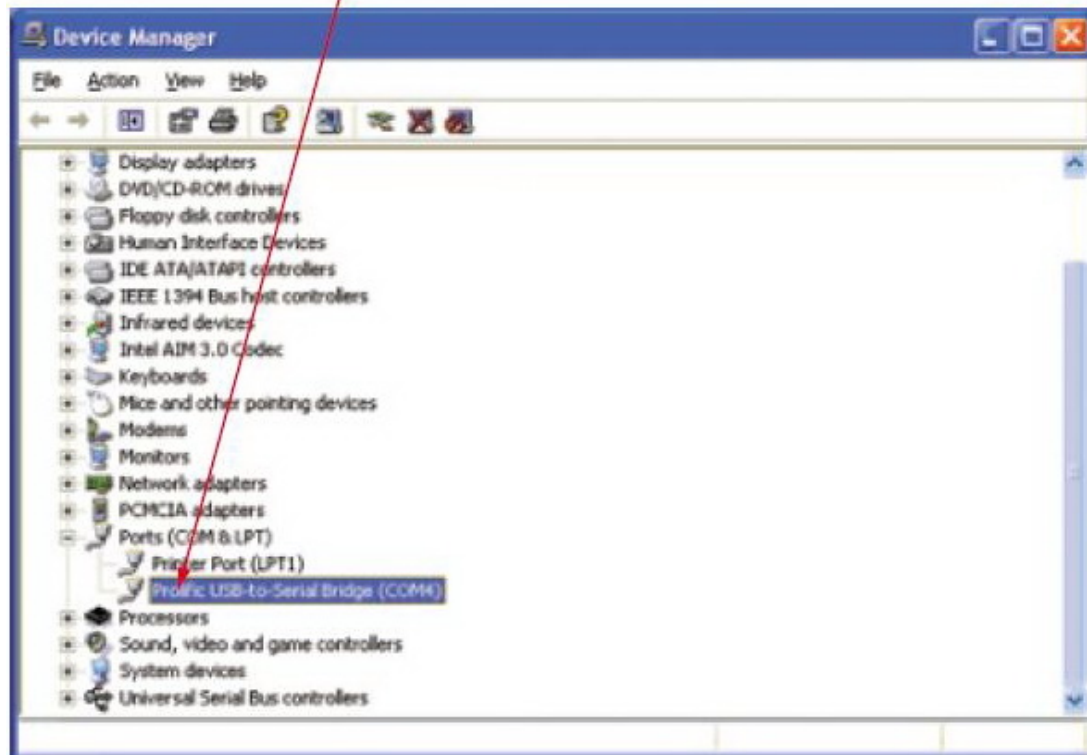
Step 4:

Select Ports (COM&LPT)



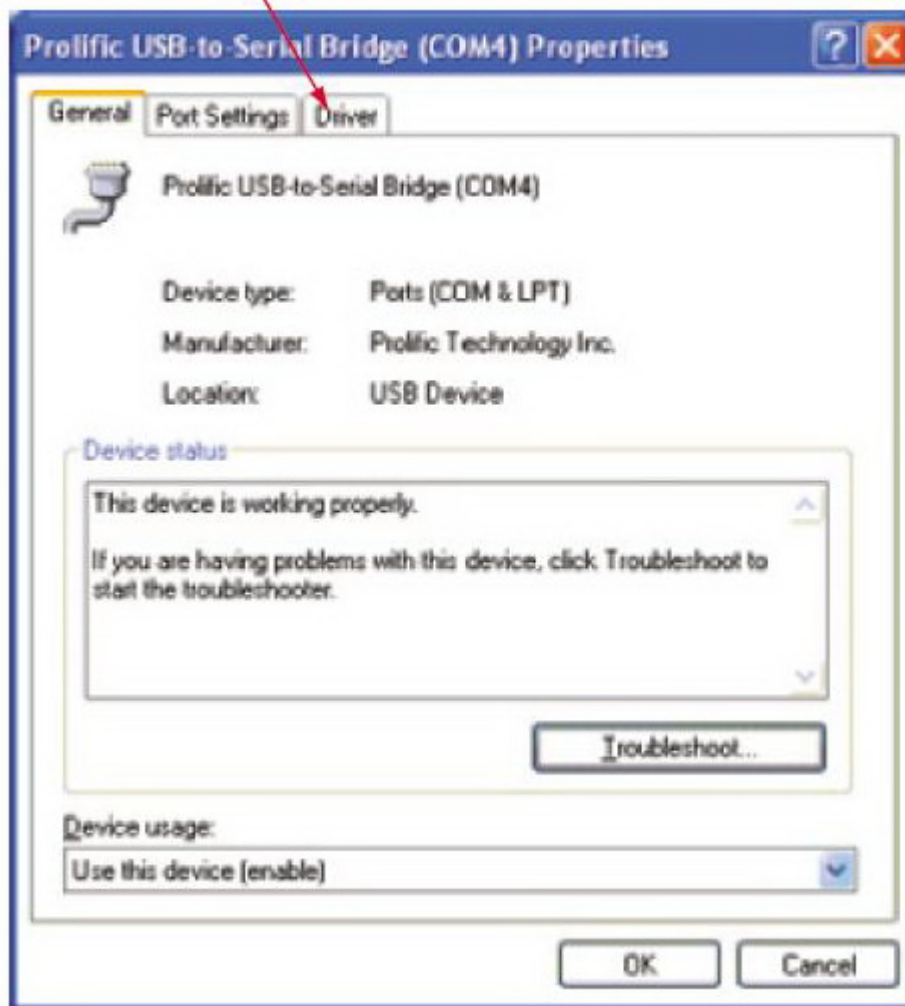
Step 5:

Select COM4



Step 6:

Select "Driver"



Step 7:

Browse COM4 properties

